

Research Assessment Exercise 2005

Department of Political Science

12 Oct 2005

Turo Virtanen

Research Profile - Clusters

- political institutions and political behaviour
- political theory, ideas and symbols
- European integration
- foreign and security policy
- globalization and political economy
- public organizations and public management

Theories, methodologies

- rational choice, policy analysis and evaluation
- comparative research
- discourse analysis and rhetoric
- continental and critical social and political theory
- political economy
- feminism

Section: political studies

- strong in political institutions and political behaviour, political ideas and symbols, and European integration
- national and Euro-elections (e.g. non-voting), voting behaviour of young generations, the transformation of Scandinavian party system, and the role on new radical right
- participation in a multidisciplinary project of the conceptual history of Finnish political culture (e.g. 'hallitseminen', 'rule' or 'governance' in English, 'Regierung' in German, and 'regera' in Swedish)
- Carl Schmitt's theory of sovereign, applications of Bourdieu's theories of political sociology, and analysis of Foucauldian biopower
- European integration: voting in European elections and EU Council of Ministers, Nordic integration policy, European Parliament's party groups, and foreign policy decision-making

Section: administration and organization studies

- strong in evaluation studies, public organizations and their management
- specialized in network analysis of organizations and theories of social capital, organization and leadership culture and ethics of public service, modernization of central government, and evaluation of administrative reforms
- contributions include applications of network analysis, conceptual and empirical analysis of commitment in leadership and organizations, modelling competences of public managers, the analysis of change of administrative structures, and national aspects of new public management

Section: world politics

- strong in research into foreign and security policies, peace and conflict research, IR theory, and global economy and democracy
- contributions include avant-garde applications of critical realism and social constructivism to theories of international relations; new explanation of the power of global finance and development of a widely influential model of the Tobin tax; an original analysis of rhetoric of war of Western powers; key contributions to discussions of political transformation and geopolitics in Northern and Eastern Europe; analysis of religious beliefs and politics (e.g. in Peru and Sudan); and a widely cited, first systematic analysis and evaluation of possibilities for democratising global institutions.

Common to the three sections

- questions of power, European integration, institutional reforms of governance, welfare state, and many theoretical and research methodologies
- a relatively good balance of mainstream studies and various critical approaches
- number of works amount to the up-and-coming research of governance as opposed to more traditional government as a nation-state centred activity

Strength

- The threefold structure of the Department an up-to-date asset for fresh research themes
 - questions of multi-level governance overlapping the traditional political and organizational borders of national, international, political and administrative institutions and actors of civil society

Strength

- Established position
 - ranked as no 123 in the world and 42 in Europe (quantity and impact of articles) – far the best in Finland
 - Largest department in Finland
- Intellectual diversity with shared themes and approaches

Strengths

- long tradition in research into parties, voting, electoral behaviour and political change in Finland => the contributions on public debate
 - the main source of research based information during the election campaigns and in the analysis of the election results for both domestic and international media
- administrative modernization, evaluation
- global democracy, European security policy, nationalism

Strengths

Feminist research: gender, politics and the state

- Finnish and Nordic gender equality discourses, gender quotas, women's movements, state feminism, women's political representation and public policy-making (e.g. employment, prostitution, violence against women, and childcare)
- co-operation with interdisciplinary and/or international research networks (e.g. comparative project *Research Network on Gender, Politics and the State* – RNGS).

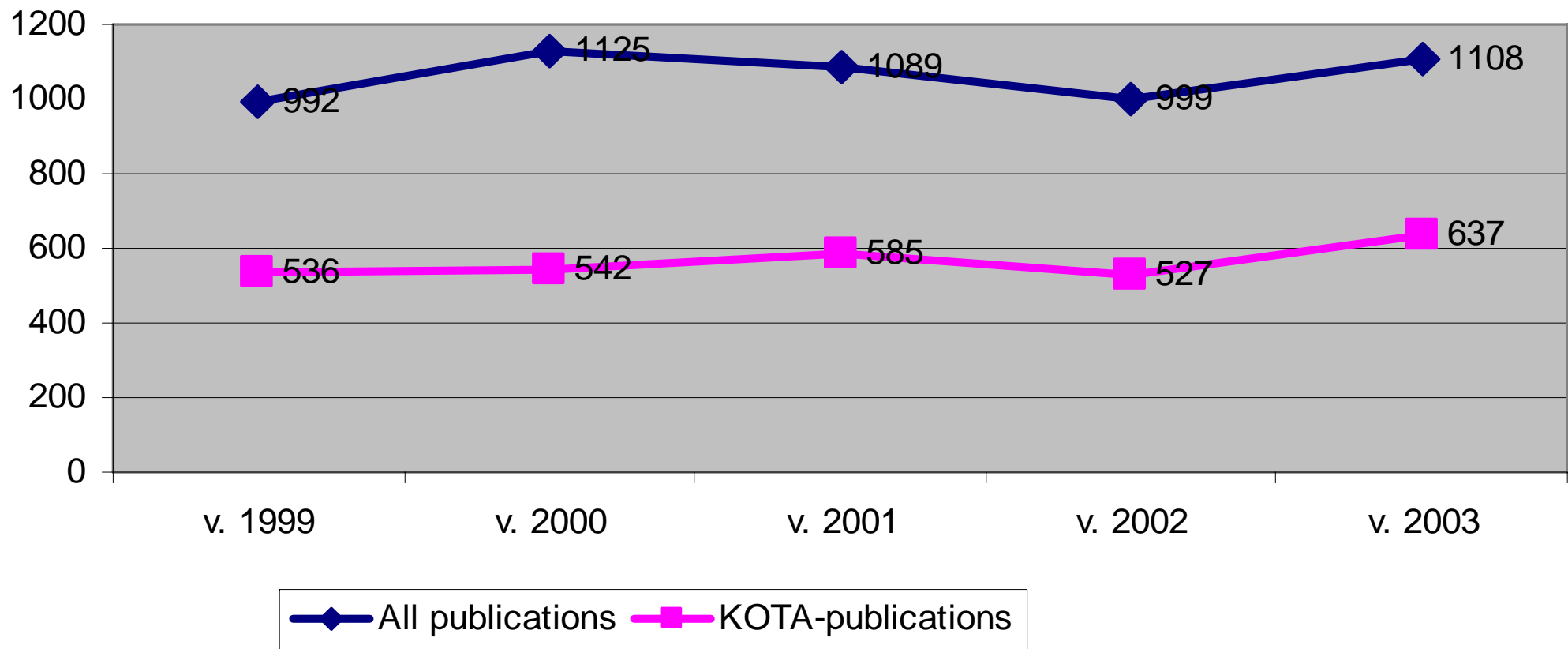
Strength

- 1999-2003 growth of teaching output from 16300 ECTS to 32300 ECTS without any real increase in the number of teaching staff
- Between the two RAEs, the number of PhD-completions rose from 13 to 28.
- High productivity in teaching: 1999-2003 mean of 1650 ECTS per year per teacher (best in the faculty), 2100 ECTS in 2003

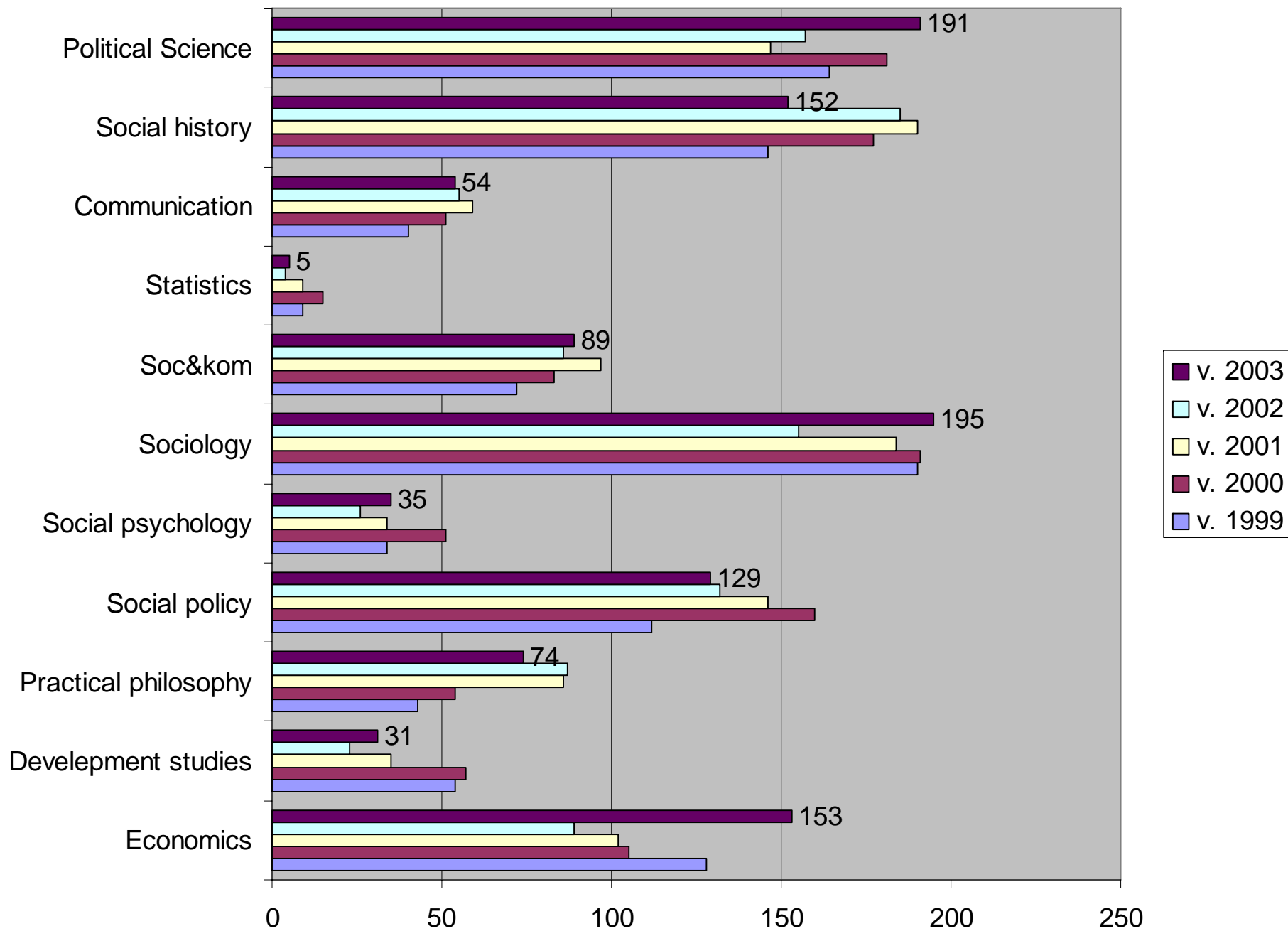
Strength

- growth in research output: 17.8 per cent from 1994-98 to 1999-2003 in all publications, and 18.3 per cent in KOTA-publications
- high productivity in research, per capita: 1999-2003 all publications 5.9 (second best in the faculty), KOTA-publications 3.7 a year (best in the faculty)

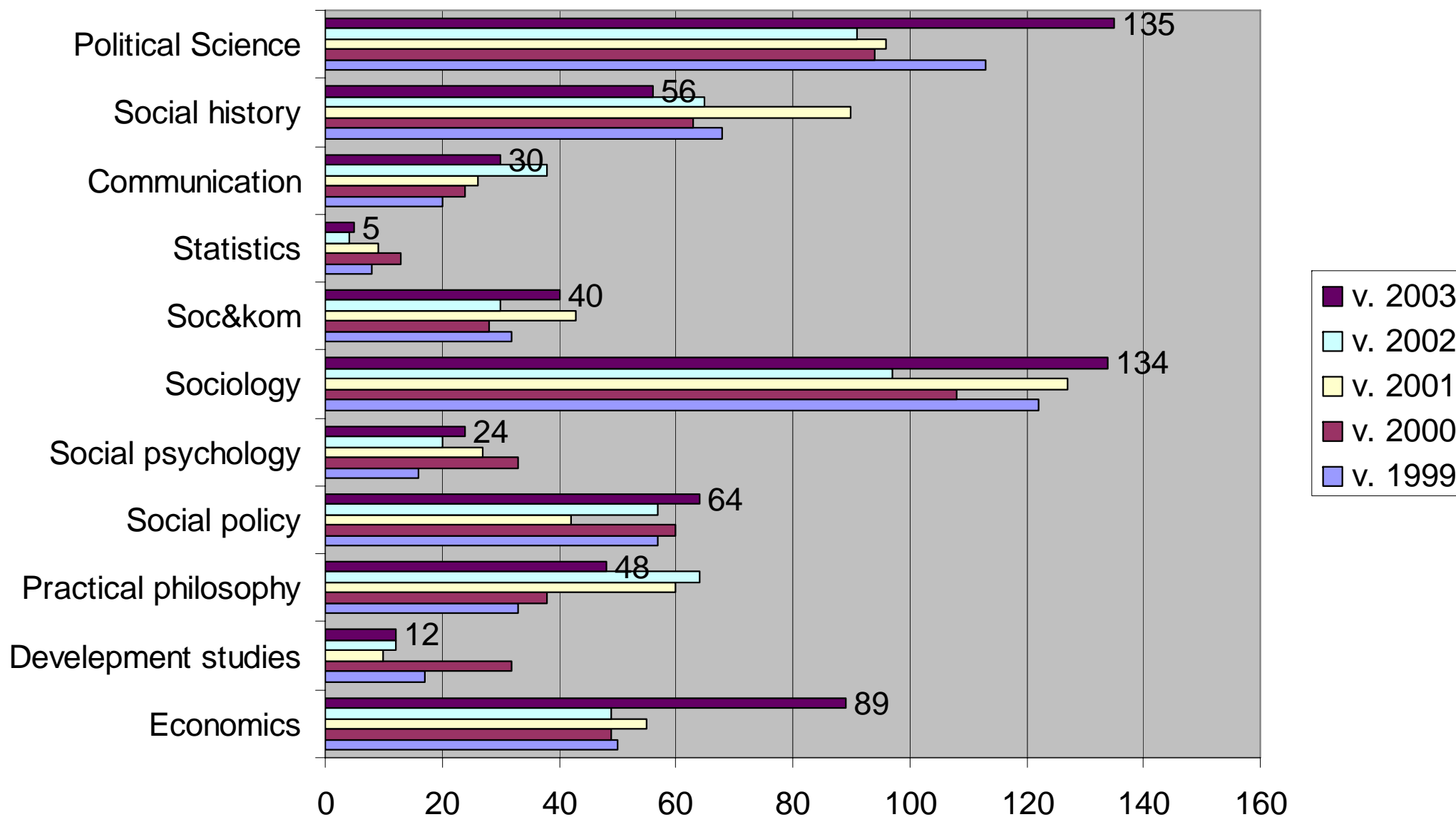
Publications of the Faculty of Social Sciences 1999-2003 (JULKI-database 5.3.2005 - dept of statistics 2.4.2004)



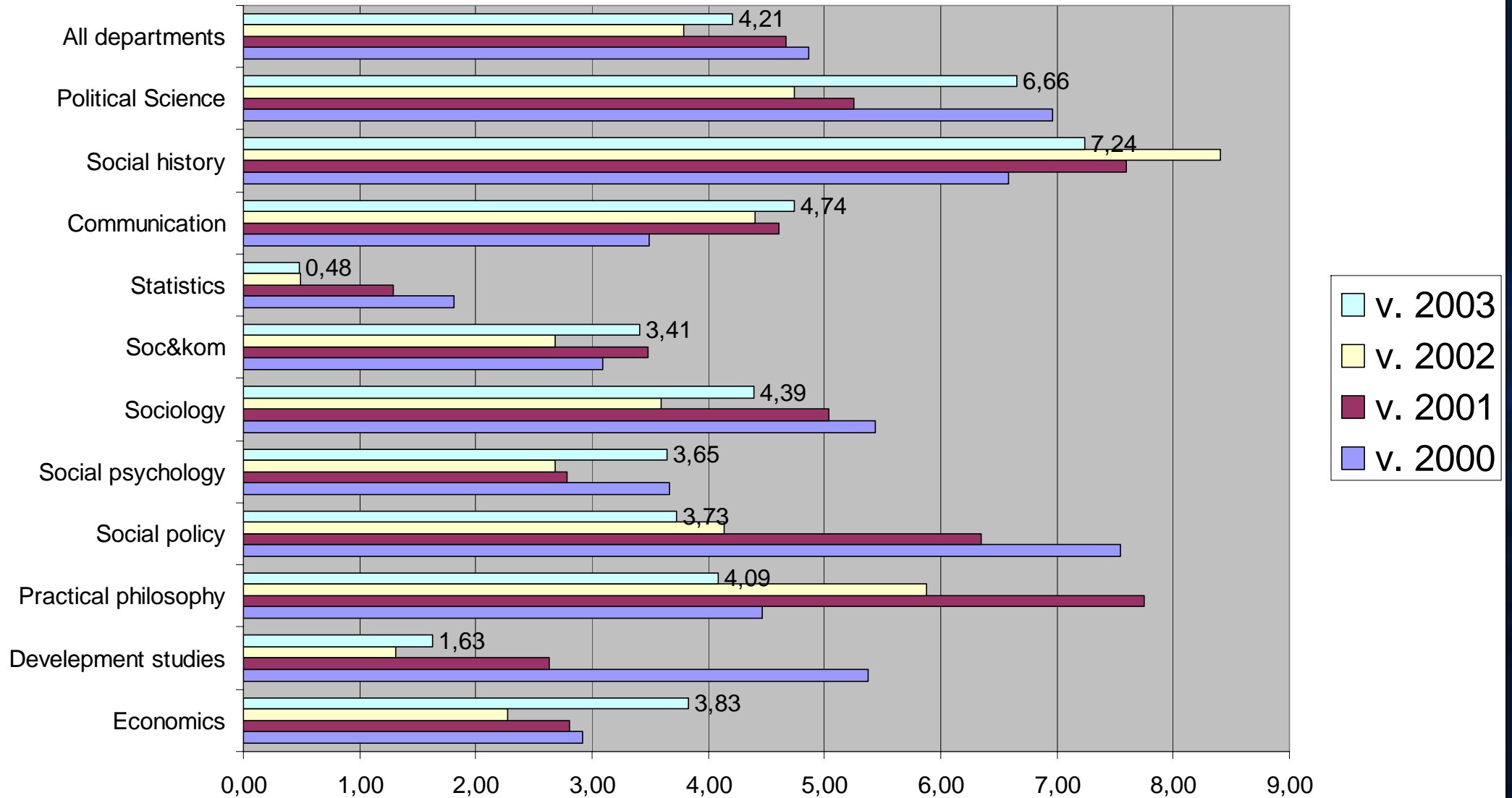
All publications 1999-2003 by department (JULKI database 5.3.2005 - dept of statistics 2.4.2004)



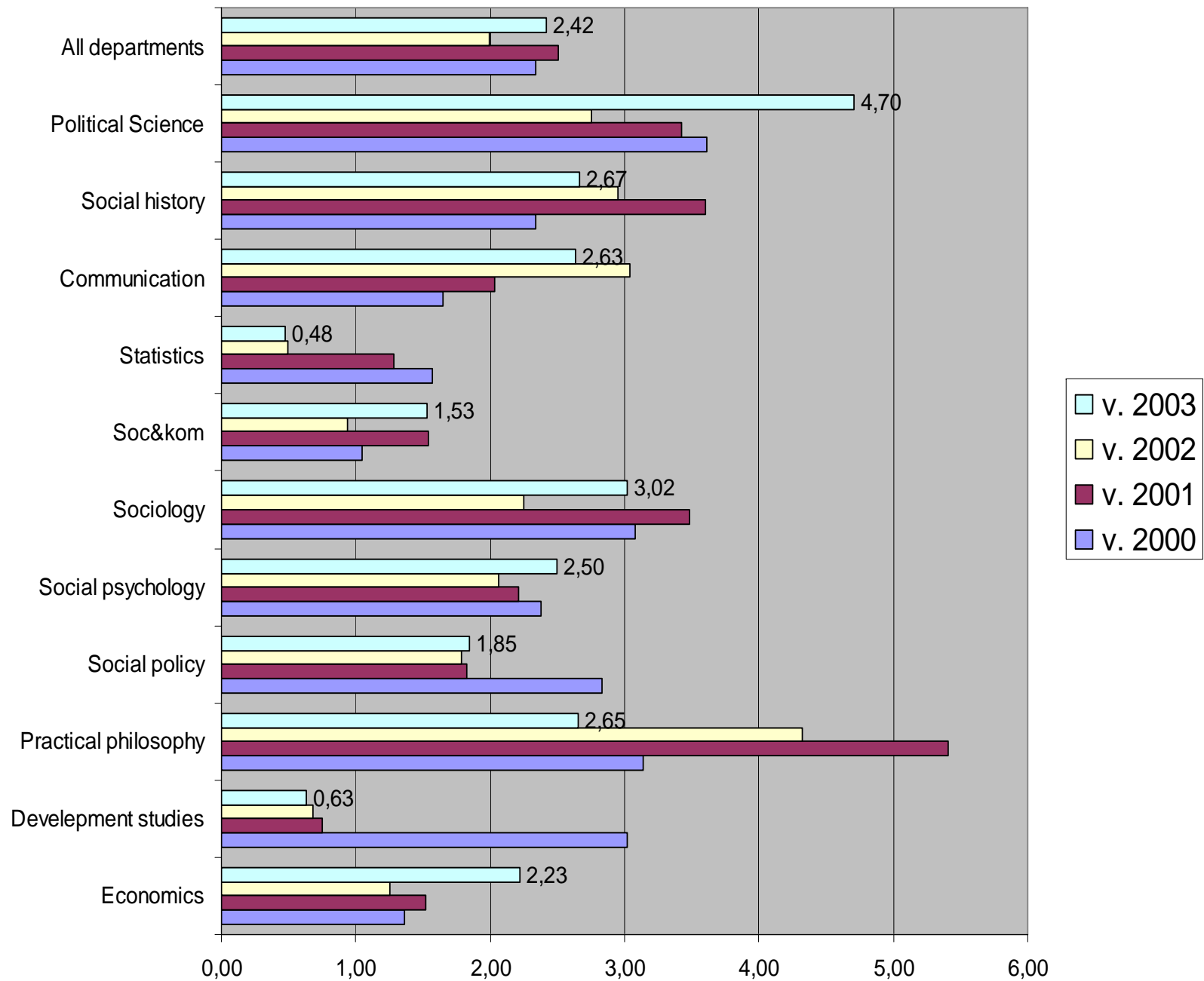
KOTA-publications 1999-2003 by department (JULKI database 5.3.2005 - dept of staticstis 2.4.2004)



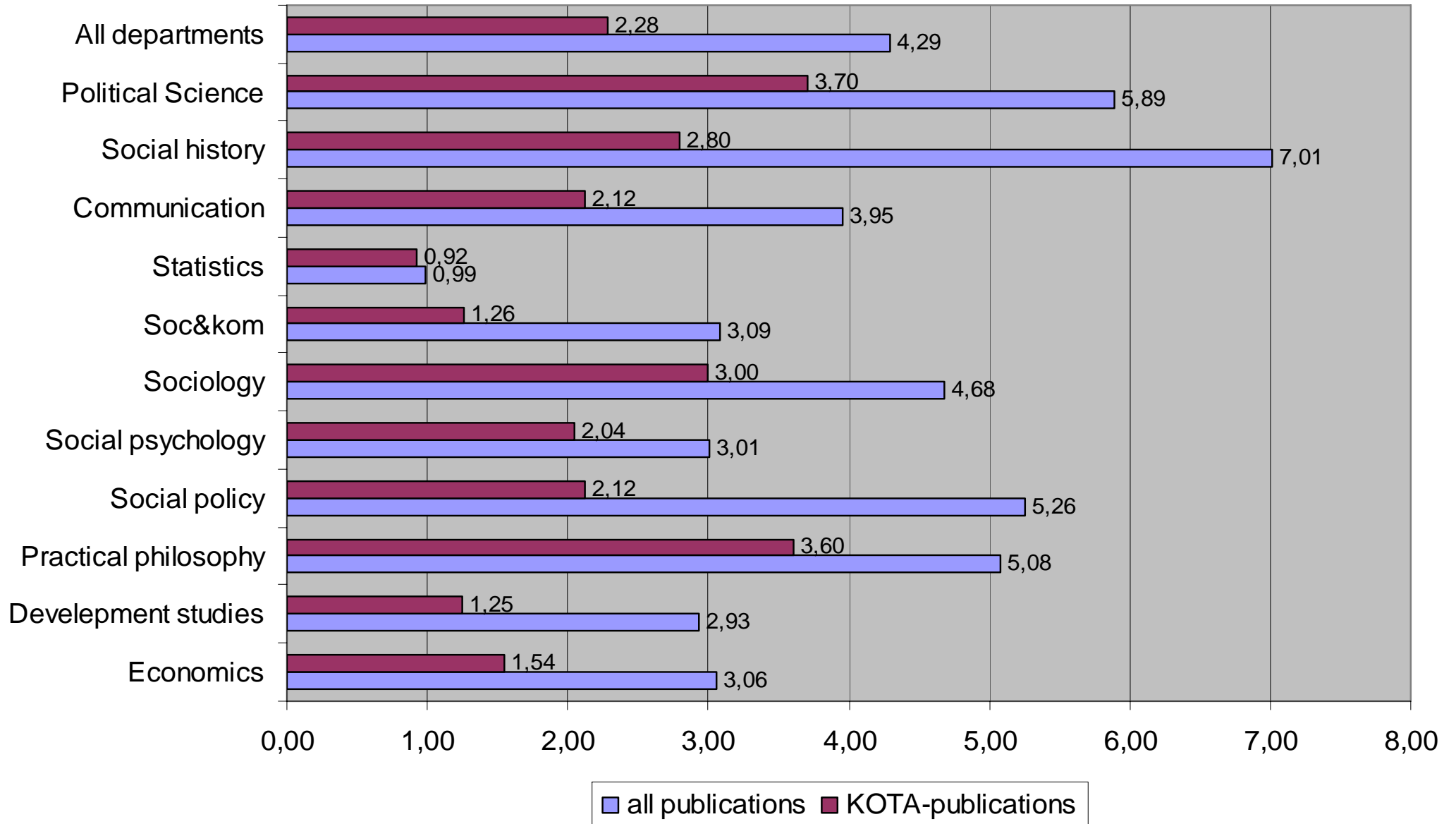
All publications / all research active staff by year (JULKI 5.3.2005 - dept of statistics 2.4.2004)



KOTA-publications / all research active staff (JULKI 5.3.2005 - dept of statistics 2.4.2005)



Annual publications / all research active staff
Annual mean 1999-2003
(JULKI 5.3.2005 - dept of statistics 2.4.2004)



Weaknesses

- External funding
- Poor gender balance in staff and post-graduation
- Poor research opportunities for core academic staff, especially professors
- International publishing not always priority

Challenges

- Freezing or declining basic budget
- More competitive external funding
- Postgraduate education
- Recruitment of core academic staff
- Workload

Opportunities

- Stronger external funding, qualified international research networks
- Cooperation in the League of European Research Universities (LERU) – starting with doctoral studies
- International publishing
- Cross-fertilization between sections
- Better gender balance in staff and post-graduation
- More research opportunities for core academic staff

Research and society

- Contributions on public debate, 126 public presentations in 2003 (best in the faculty)
- Expert assignments (parliamentary hearing, EU, UN, World Social Forum, evaluation etc.)
- Centre for European studies => EU-related contacts in expert seminars
- Commissioned research (e.g. Min. Finance, Min. of the Interior, Min. of Foreign Affairs – City of Helsinki)
- Alumni activities

The background is a dark blue gradient with several glowing, curved lines in shades of light blue and cyan. These lines create a sense of motion and depth, resembling light trails or data paths. The lines are most prominent on the left side and curve towards the right.

Questions?
Comments?